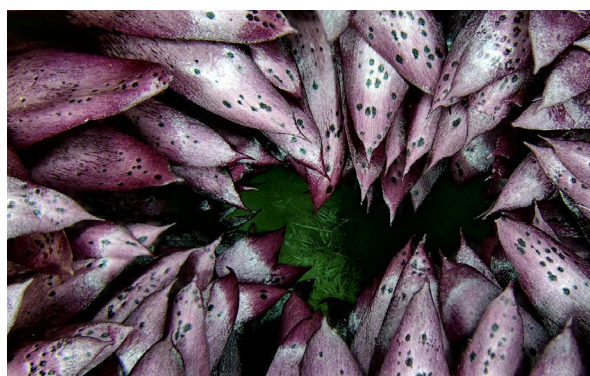
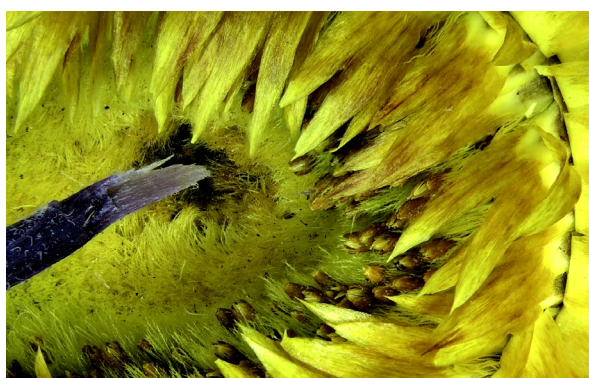
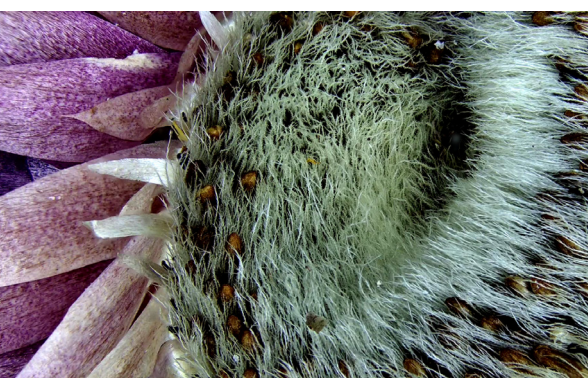
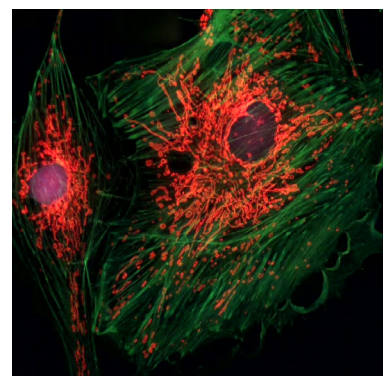
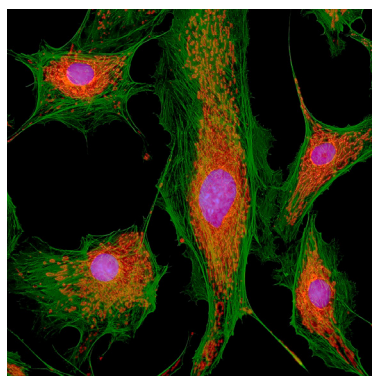
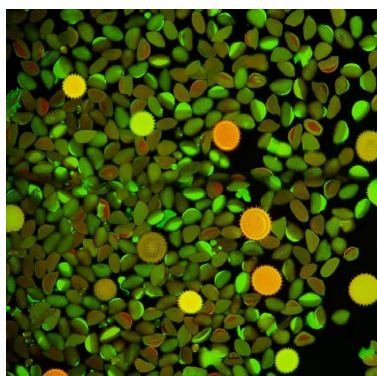
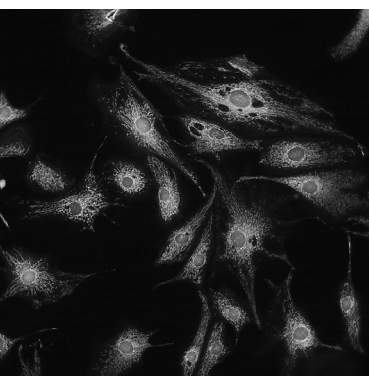
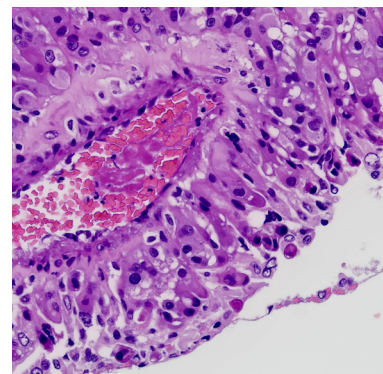
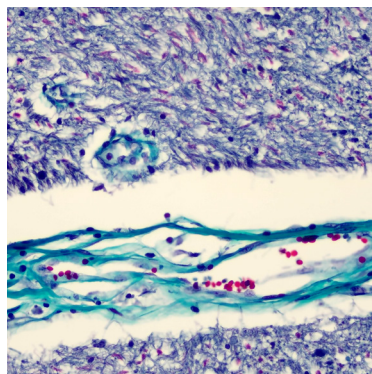
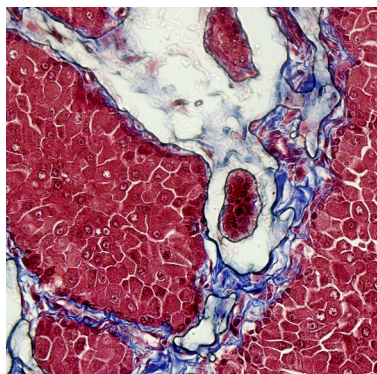
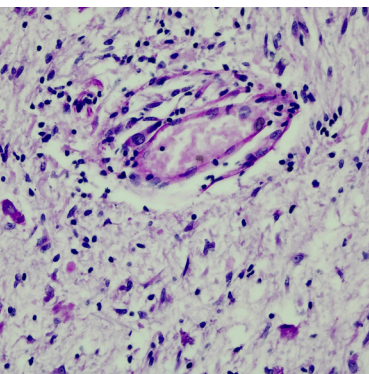


**INNOVATED FOR TOP BRAND MICROSCOPES**

*Create a Stunning Microscope Imaging System for You*





# For Inverted Microscopes



Applicable Model:  
Ti2

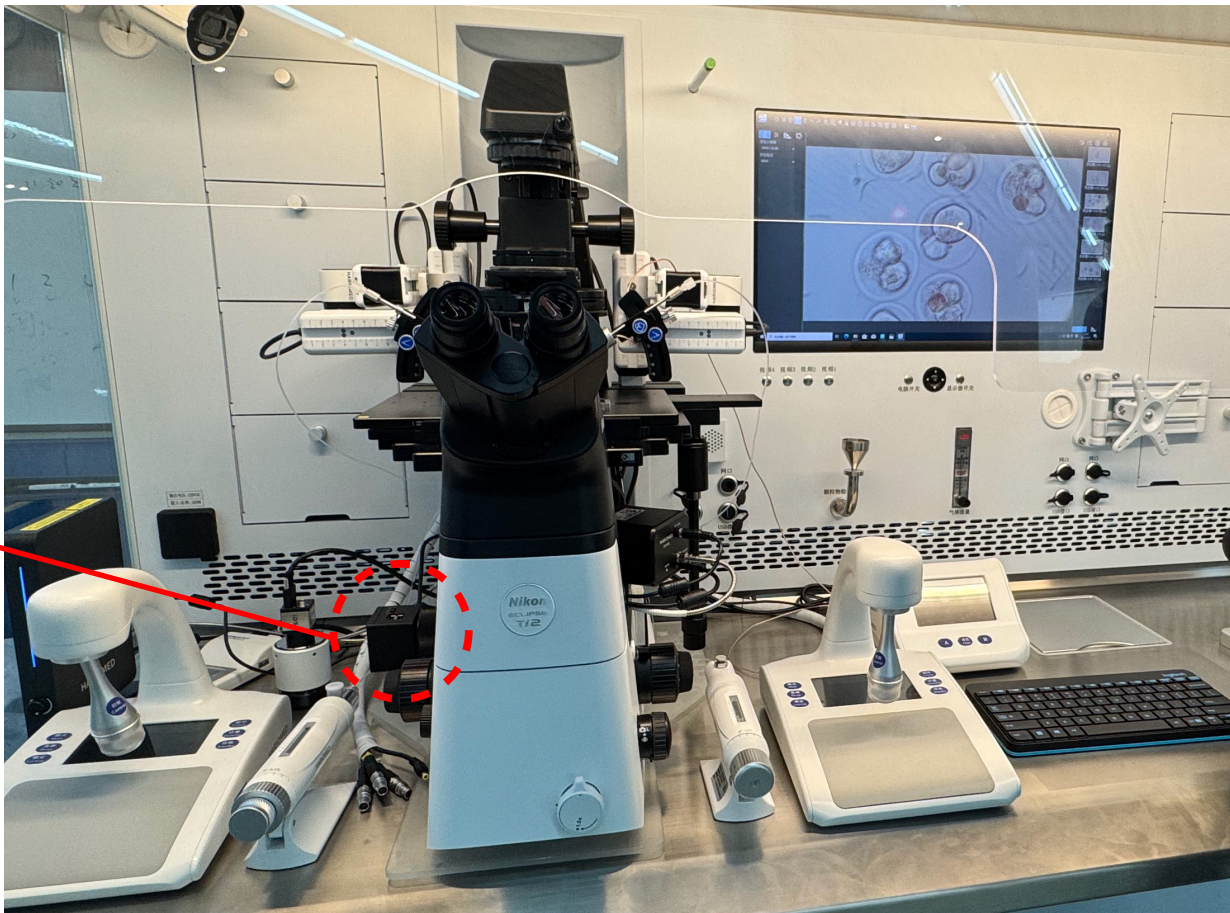
Dedicated camera(Color)  
With 0.63X tube lens  
(8.3MP)



## Function

● Standard   ○ Optional   – N/A

Built-in OSD	●
Pre-installed Office suits	–
15.6"high color gamut monitor	–
Image output methods	
5G WiFi	–
USB	●
HDMI	●
Network	●



## Key Product Features

- **Embedded Software:** Built-in KoPa View software (Linux-based OS) with HDMI output
- **Ultra HD Display:** True 4K resolution (3840×2160@60fps) across all interfaces; Compatible with USB/HDMI/Network outputs
- **Dedicated Imaging Modes:** Depth of field fusion & image stitching; Requires KoPa Capture Pro Windows software;
- **User-Friendly Operation:** Mouse/keyboard control support; Direct save to USB storage devices
- **Optical Integration:** Integrated 0.63X optical interface; Perfectly matched with Ti2 microscopes; Enables ultra-wide field of view observation

## Dedicated image mode

- Optimized for Ti2 microscopy systems;
- Pre-configured professional imaging parameters;
- WYSIWYG (What You See Is What You Get) observation.



## Multiple image output modes

Multi-Interface Output: Simultaneous USB + HDMI output ; Simultaneous Network + HDMI output.



### USB output / Network output

Connect the computer via USB /network cable by using software" KoPa Capture Pro".



### HDMI output

Connect the camera to a monitor or large TV via HDMI cable with OSD "KoPa View".





①	USB output/ power supply	USB: connect to computer, the computer can capture images through software; LAN: connect to the adapter, power supply to the camera, connect to the computer through the network cable to capture images.
②	HDMI output	OSD "KoPa View" is available for image control .etc
③	Network output	LAN: Connects to a computer via a network cable, suitable for wired long distance image transmission
④	USB2.0 interface	Can be connected to a mouse , keyboard, USB stick
⑤	USB/OFF/LAN working mode switching	USB: when the USB cable is connected to the computer, the image is captured through the software on the computer side; OFF: power off; LAN: the image is captured through the network cable connected to the computer

## Specifications

Models	MC2000-M
Category	AS-TI-08
Physical resolution	8.3MP
Image sensor	SONY IMX678 CMOS
Exposure mode	Rolling Shutter
Maximum resolution	3840×2160 (8,294,400Pixels)
ISO sensitivity	Equivalent to 100-12800
Sensor size	1/1.8"
Pixel size	2μm×2μm
Spectral response	400-650nm
Exposure capability	Real-time auto and manual adjustment
Exposure time	10μs-10s
White balance	Real-time auto and manual RB adjustment
Preview resolution	3840×2160@60fps
Power supply	DC 5V 2A
A/D conversion bit depth	12bit
Tube lens	0.63X
Software and App	Windows Software: KoPa Capture Pro, Embedded software: KoPa View

## Accessories

HDMI cable



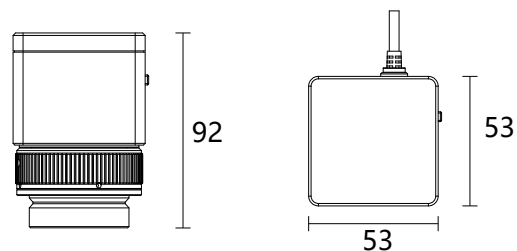
USB mouse



16GB FAT-formatted  
USB-drive



## Dimensions(Unit:mm)



**KoPa**<sup>®</sup> GuangZhou Ostec Electronic Technology Co.,Limited

Manufacturer: No.8 West Lane, Jiangcheng Road, Bangjiang East Village,Dalong street, Panyu District, Guangzhou, China.



High-Tech Enterprise certificate number:  
GR202344009665



ISO9001 Verification No:00223Q26818R3S

The content of this leaflet has been reviewed by our company at the time of its release. Due to technological development, the actual product is subject to change without notice.

The names of other companies, product names, and trademarks **OLYMPUS** **Nikon** **Leica** **ZEISS** **Apple** **Android** **HarmonyOS** **W** **du** recorded on this leaflet are owned by their companies